

# GIGA X8 Professional



## Mudar o filtro

Material necessário:  
cartucho do filtro CLARIS Pro Blue  
Saqueta de 4 unidades (Art. 69670)

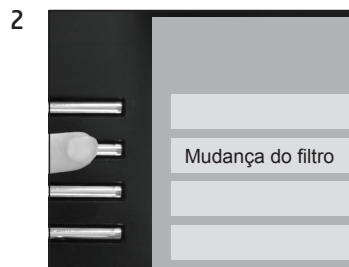


Este manual breve não substitui o “Manual de instruções GIGA X8 Professional”. Primeiro, leia e respeite as instruções de segurança e advertências para evitar perigos.

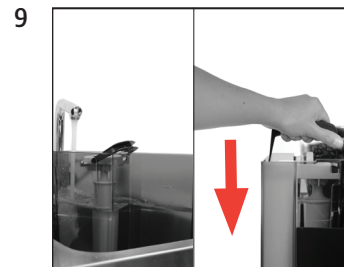
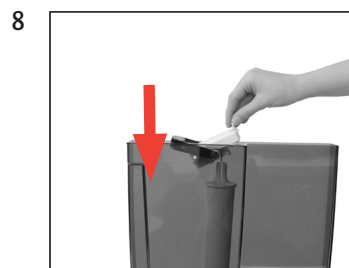
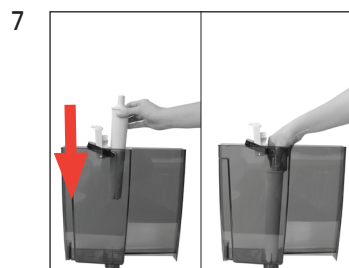
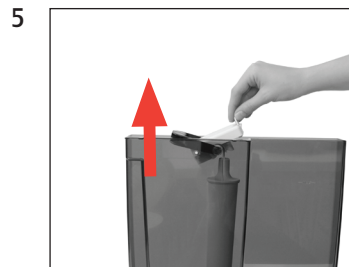
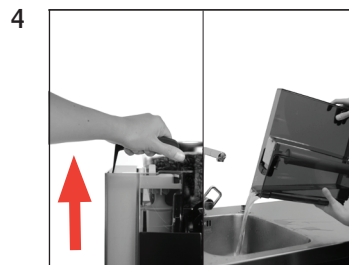
Pré-requisito: »Mudança do filtro«



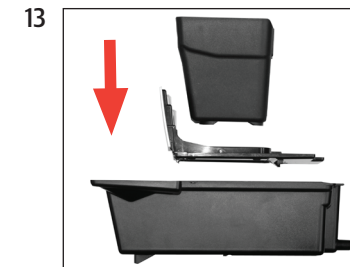
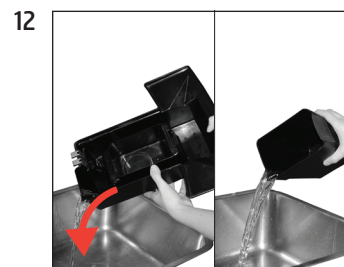
»Estado de manutenção (1/5)«



»Mudar o filtro.« / »Pulsar o Rotary Switch.«



»Filtro é lavado.«  
»Esvaziar bandeja de recolha de água.«



»Mudança do filtro« / »O filtro foi lavado com sucesso.«  
»Por favor, selecione o seu produto:«