

jura®



Cool Control

Bedienungsanleitung

Instructions for use

Mode d'emploi

Istruzioni per l'uso

Gebruiksaanwijzing

Modo de empleo

Manual de instruções

Bruksanvisning

Instruksjonsbok

Instrukcja obsługi

Руководство по эксплуатации

Návod k obsluze

de

en

fr

it

nl

es

pt

sv

no

pl

ru



cs

Your Cool Control



Control elements	10
Important information	11
Proper use	11
For your safety	11
1 Preparing and using for the first time	13
Setting up and connecting	13
Cooling milk	13
2 Cleaning and maintenance	14
3 Transport and environmentally friendly disposal	14
Transport	14
Disposal	14
4 Technical data	14
5 JURA contact details / Legal information	14

Symbol description

Warnings

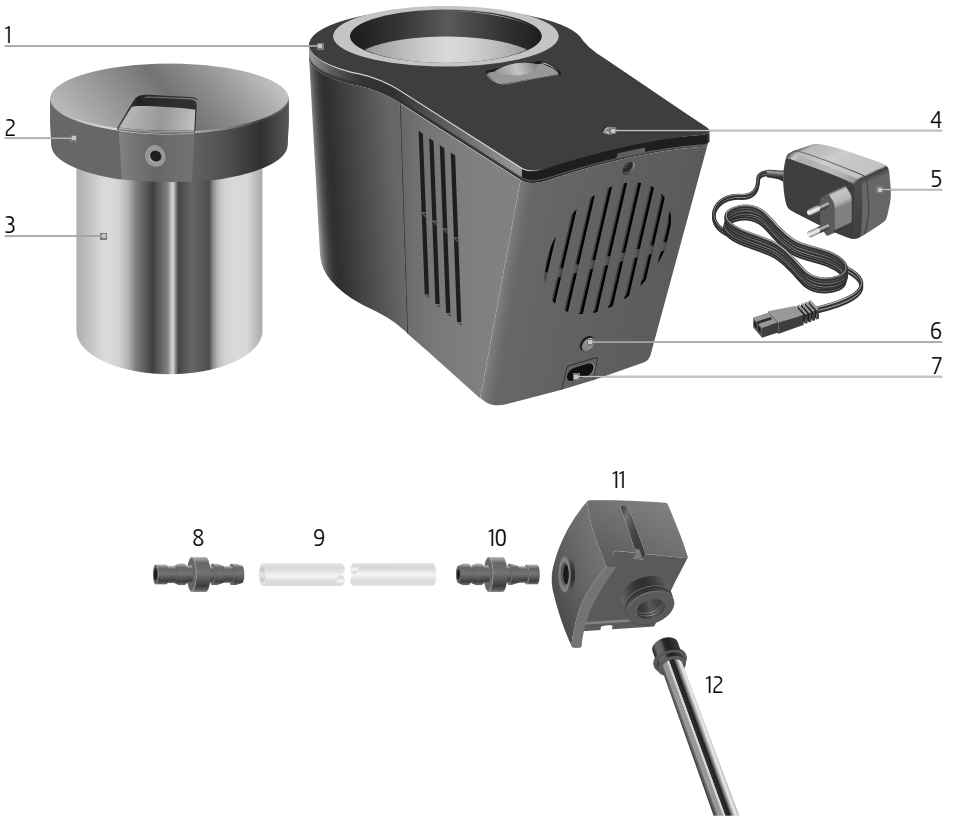
-  **CAUTION** Always take note of any information marked with the words CAUTION or WARNING and a warning sign. The signal word **WARNING** draws your attention to potential serious injury, and the signal word **CAUTION** to potential minor injury.
-  **WARNING**

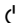
Symbols used

-  **Prompt to take action.** This symbol means that you are being prompted to perform some action.
-  **Information** and tips to make it even easier to use your Cool Control.

Control elements

Control elements



- 1 Cool Control
- 2 Cover
- 3 Stainless steel container
- 4 Operating display
- 5 Mains cable with power supply unit
- 6  On/Off button
- 7 Socket

- 8 Connecting piece (may vary depending on the machine and the associated cappuccino frother)
- 9 Milk pipe
- 10 Connecting piece
- 11 Adapter
- 12 Metal pipe

Important information

Proper use

The machine is designed and intended for private domestic use. It should only be used to cool milk and keep it fresh in the stainless steel container supplied. Use for any other purpose will be deemed improper. JURA cannot accept any responsibility for the consequences of improper use.

Before using the machine read these instructions for use thoroughly and completely and comply with the instructions they contain. A warranty service is not applicable for damage or defects caused by non-compliance with the instructions for use. Keep these instructions for use close to the machine and pass them on to the next user.

For your safety

Please carefully read and observe the important safety information set out below. To avoid danger of potentially fatal electric shock:

- Never use a machine which is damaged or has a defective mains cable.
- Never start the machine with wet hands.
- Before starting the machine, ensure that the mains cable is dry.
- Only use the power supply unit supplied as standard to connect the machine to the alternating current network.
- In the event of signs of damage, for example if there is a smell of burning, unplug the machine immediately from the mains supply and contact JURA service.
- If the mains cable of this machine is damaged, it must be repaired either directly by JURA or by an authorised JURA service centre.
- Make sure that the Cool Control and the mains cable are not located close to hot surfaces or naked flames.
- Be careful to ensure that the mains cable is not trapped and does not rub against sharp edges.
- Never open and repair the machine yourself. Do not modify the machine in any way that is not described in the instructions for use. The machine contains live parts. Repairs may only be carried out by authorised JURA service centres, using original spare parts and accessories.

Important information

A defective machine is not safe and could cause injury or fire. To avoid damage and any associated risk of injury or fire:

- Ensure that the ventilation slots are not covered.
 - Never allow the mains cable to loosely hang down. The mains cable could pose a tripping hazard or become damaged.
 - Protect your Cool Control from environmental influences such as rain, frost and direct sunlight.
 - Do not immerse the Cool Control, cable or connections in water.
 - Do not put the Cool Control or any individual parts in the dishwasher.
 - Switch your Cool Control off before cleaning and disconnect the mains plug. Always wipe the Cool Control with a damp cloth rather than a wet one, and protect it from prolonged exposure to water splash.
 - Do not pour the milk you want to cool directly into the machine. Use the stainless steel container supplied as standard.
 - Only connect the machine to the mains voltage in accordance with the information on the rating plate. The rating plate is located on the underside of your Cool Control. Further technical data is provided in these instructions for use (see Chapter 4 'Technical data').
- Switch the machine off if you are going to be absent for a longer period of time.
 - Only operate the machine when supervised.
 - Children may not clean or service the machine unless supervised by a responsible person.
 - Do not allow children to play with the machine.
 - Keep children under the age of 8 away from the machine, or supervise them constantly.
 - Children aged 8 and over may only operate the machine without supervision if they have been instructed in how to use it safely. Children must be able to recognise and understand the potential dangers arising from incorrect use.
- People, including children, who
- do not have the physical, sensory or mental capabilities to use the machine safely or
 - are inexperienced or lack knowledge in how to use the machine safely
- must be supervised by a responsible person when using it, or must be instructed in how to use it correctly.

1 Preparing and using for the first time

1 Preparing and using for the first time

Setting up and connecting

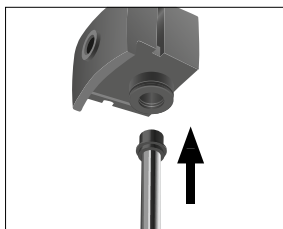
When setting up your Cool Control, please note the following:

- Set the machine down on a horizontal surface that is not sensitive to water.
- Choose a spot for your Cool Control which is protected against overheating. Ensure that the ventilation slots are not covered.
- In the interests of hygiene, you should use a damp cloth to clean both the inside and outside of your new machine before starting it. Rinse the stainless steel container out thoroughly.

⚠ WARNING

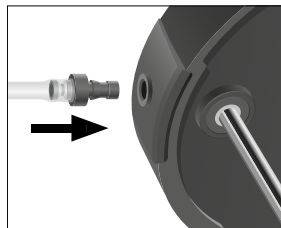
If the machine is operated with a defective mains cable, there is a danger of potentially fatal electric shock.

- ▶ Never use a machine which is damaged or has a defective mains cable.
-
- ▶ Insert the cable for the power supply unit into the Cool Control's socket.
 - ▶ Insert the mains plug into a power socket.
 - ▶ Insert the metal pipe into the adapter.



- ▶ Insert the adapter into the cover.

- ▶ Insert one side of the milk pipe into the adapter.



Cooling milk

- ▶ Fill the stainless steel container with milk.
 - ▶ Use the cover to close the stainless steel container.
 - ▶ Place the stainless steel container in the Cool Control.
 - ▶ Connect the milk pipe with the cappuccino frother on your machine.
- i** Please note that the connecting piece may vary depending on the machine and the associated cappuccino frother.
- ⏻** ▶ Press the On/Off button. The operating display lights up and the machine starts cooling.
- i** Your JURA Cool Control always keeps your milk within the optimum temperature range. The milk cannot freeze.
- i** If you want to **end the cooling process**, press the On/Off button **⏻**.
- i** If you want to shut down the machine, remove the mains plug from the power socket.

2 Cleaning and maintenance

i Do not use harsh or abrasive cleaning agents or hard objects for cleaning. This may damage the machine, the coating of the stainless steel container holder and the stainless steel container.

- ▶ Before cleaning the machine, remove the mains plug from the power socket.
- ▶ Clean the inside of the machine with a damp cloth.
- ▶ Clean the outside of the machine with a damp cloth.
- ▶ Rinse the stainless steel container and individual parts thoroughly under running water.

i Please note that only the stainless steel container and the metal pipe are dishwasher-safe – all other parts (cover, adapter etc.) are not.

3 Transport and environmentally friendly disposal

Transport

Keep the packaging for your Cool Control. It should be used to protect the machine during transport. Clean the stainless steel container before transporting it.

Disposal

Please dispose of old machines in an environmentally neutral way.



Old machines contain valuable, recyclable materials which should be recycled. Please therefore dispose of old machines via suitable collection systems.

4 Technical data

Voltage	100–240 V ~, 50–60 Hz
Safety test	
Power	25 W
Temperature range	Cools up to 25 °C below the ambient temperature, but no lower than 4 °C
Holding capacity of stainless steel container	0.6 l
Cable length	Approx. 1.8 m
Weight	1.5 kg
Dimensions (W × H × D)	14.4 × 15.6 × 23 cm
Climate class	N (for ambient temperature from + 16 °C to + 32 °C)

5 JURA contact details / Legal information

JURA Elektroapparate AG
Kaffeeweltstrasse 10
CH-4626 Niederbuchsiten
Tel. +41 (0)62 38 98 233

@ You will find additional contact details for your country at www.jura.com.

Directives

The machine complies with the following directives:

- 2014/35/EU – Low Voltage Directive
- 2014/30/EU – Electromagnetic Compatibility
- 2009/125/EC – Ecodesign Directive

Technical changes

We reserve the right to make technical changes. The diagrams used in these instructions for use are for illustration purposes only and do not represent

the original colours of the machine. Some details of your machine may vary.

Feedback

Your opinion is important to us! Use the contact link at www.jura.com.

Copyright

The instructions for use contain information which is protected by copyright. It is not permitted to photocopy these instructions for use or translate them into another language without the prior written consent of JURA Elektroapparate AG.

de

en

fr

it

nl

es

pt

sv

no

pl

ru

cs

